

Collie Club of America 2016 National Specialty Herding Test /Trial

High Reaches Farm
612 Fuqua Rd.
Rockfield, KY 42274
March 20-21, 2016



Collie Club of America
2016

Events #2016115201 (Sunday Sheep) and #2016115202 (Sunday Ducks),
#2016115203 (Monday Ducks) and #2016115204 (Monday Sheep)

Emergency contact information:

Ericka Wojack ewojack@comcast.net 901-828-0662

Robert Olson secretary@livetrial.net 630-456-0097

Welcome to Collie Club of America National Specialty Herding Test and Trial!

PLEASE NOTE: Rockfield is in the CENTRAL time zone and is one hour earlier than the main show site in Louisville.

Lunch break during sheep classes at judge's discretion.

Please note that judging of sheep classes will run concurrently with judging for the duck classes. This schedule should minimize ring conflicts; judges may move dogs in the run order to accommodate conflicts if necessary. Per AKC rules, judges have the authority to refuse to judge any dog which does not appear within five minutes of being called for its run.

LUNCH: Lunch will be available on site for purchase each day. \$8 for assorted sandwiches along with homemade soup and desserts. Beverages are not included. Lunches will be limited and **PRIOR RESERVATION** is required by Tuesday, March 15. Please send the number of lunches required each day to Ericka Wojack at ewojack@comcast.net or fill out the form at <http://rdolson.org/premiums/#cca-herding>

DINNER: Herding dinner at 6pm on Sunday evening near the hotels. There will be a sign up sheet at the secretary's table. Order from the main menu. 20% gratuity will automatically be added to your check.

Chuy's (Mexican)

3260 Ken Bale Blvd.

Bowling Green, KY 42103

(270) 796-2999

DIRECTIONS TO THE TRIAL LOCATION:

High Reaches Farm - 612 Fuqua Road, Rockfield, KY 42274

If Coming from the North:

Starting on I-65 N toward Bowling Green

Take EXIT 20B on the left toward Owensboro/Bowling Green (0.6 miles)

Merge onto William H. Natcher Pkwy N. (4.5 miles)

Take the US-68 exit, EXIT 7, toward Russellville/Bowling Green (0.3 miles)

Turn left onto US-68 W/KY-80/Russellville Road (3.3 miles)

Turn right onto KY-1083/Browning Road (1.1 miles)

Turn Right onto Fuqua Road (0.4 miles)

Follow gravel driveway and curve right to High Reaches Farm

If Coming from the South:

Starting on I-65 N toward Louisville

Take EXIT 20A-B toward Owensboro/Scottsville (0.3 miles)

Take EXIT 20B on the left toward Owensboro/Bowling Green (0.9 miles)

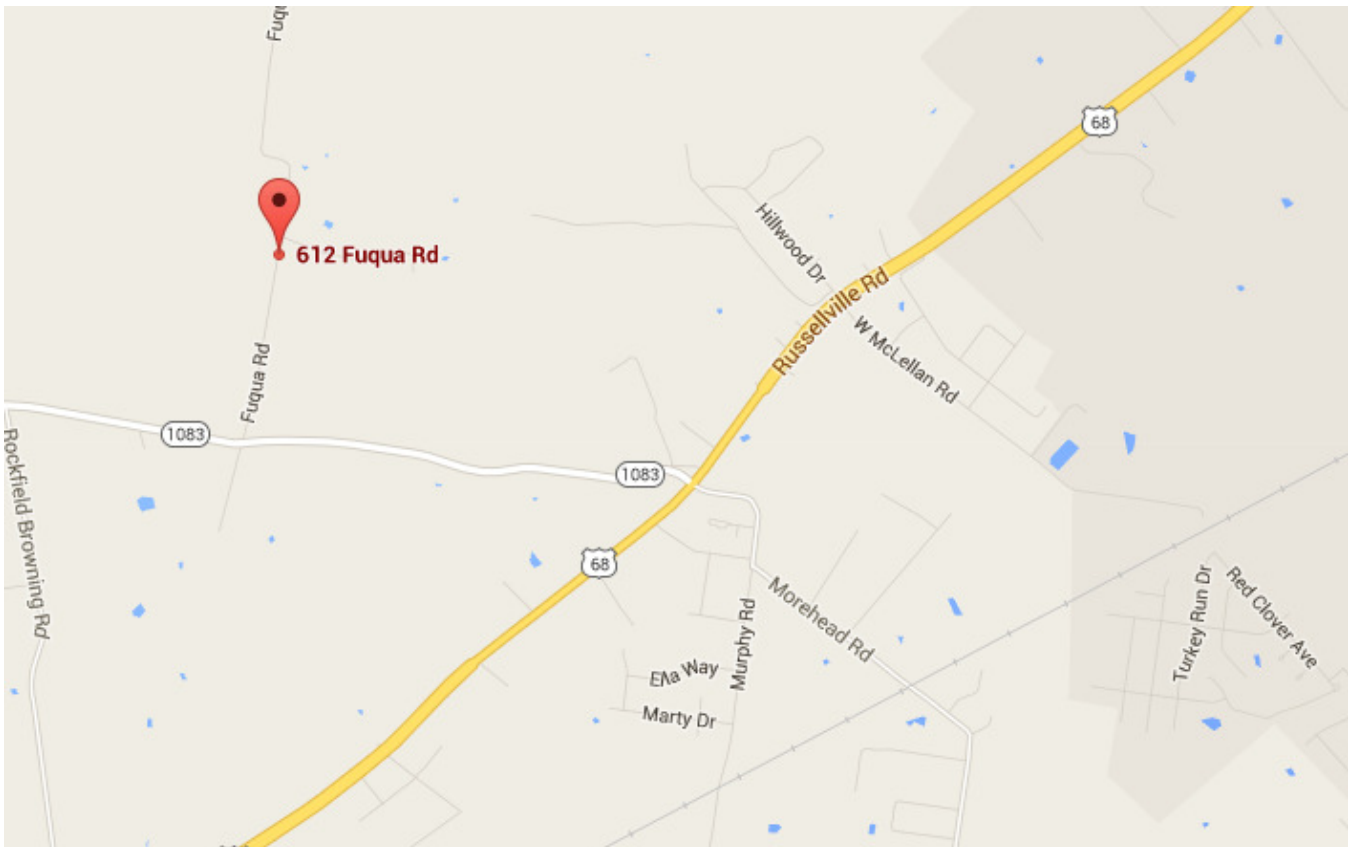
Merge onto William H. Natcher Pkwy N. (4.5 miles)

Take the US-68 exit, EXIT 7, toward Russellville/Bowling Green (0.3 miles)

Turn left onto US-68 W/KY-80/Russellville Road (3.3 miles)

Turn right onto KY-1083/Browning Road (1.1 miles)

Turn Right onto Fuqua Road (0.4 miles)



HOTELS: (Please check with individual hotels for dog policy)

Super 8 Bowling Green South (12.1 miles; 15 minutes)

250 Cumberland Trace Rd, Bowling Green, KY 42103 (270) 781-9594

Candlewood Suites (12.5 miles; 16 minutes)

540 Wall St, Bowling Green, KY 42103 (270) 843-5505

Cardinal Motel (8.7 miles; 17 minutes)

1310 Us 31w Byp, Bowling Green, KY 42101 (270) 842-0328

Country Inn & Suites (10.5 miles; 20 minutes)

535 Wall St, Bowling Green, KY 42104 (270) 781-7200

Days Inn (12 miles; 15 minutes)

4617 Scottsville Rd, Bowling Green, KY 42104 (270) 781-6470

Drury Inn (12 miles; 15 minutes)

3250 Scottsville Rd, Bowling Green, KY 42104 (270) 842-7100

Econolodge (12.4 miles; 16 minutes)

3160 Scottsville Rd, Bowling Green, KY 42104 (270) 781-3460

Hampton Inn (12.4 miles; 16 minutes)

233 Three Springs Rd, Bowling Green, KY 42104 (270) 842-4100

Holiday Inn Express (12.4 miles; 16 minutes)

165 Three Springs Rd, Bowling Green, KY 42104 (270) 843-3200

Holiday Inn University Plaza (10 miles; 20 minutes)

1021 Wilkinson Trace, Bowling Green, KY 42103 (270) 745-0088

La Quinta Inn & Suites (12 miles; 15 minutes)

1953 Mel Browning St, Bowling Green, KY 42104 (270) 783-0083

Motel 6 (12.4 miles; 16 minutes)

3139 Scottsville Rd, Bowling Green, KY 42104 (270) 843-0140

Ramada Inn (12.1 miles; 15 minutes)

4767 Scottsville Rd, Bowling Green, KY 42104 (270) 781-3000

Red Roof Inn (12.4 miles; 16 minutes)

3140 Scottsville Rd, Bowling Green, KY 42104 (270) 781-6550

Staybridge Suites (7 miles; 10 minutes)

680 Campbell Ln, Bowling Green, KY 42101 (270) 904-0480

Super 8 Bowling Green North (18.5 miles; 20 minutes)

110 Willamette Lane, Bowling Green, KY 42101 (270) 781-4900

TownePlace Suites (9 miles; 15 minutes)

1818 Cave Mill Rd, Bowling Green, KY 42104 (270) 782-4714

RV INFORMATION:

Camping - KOA

1960 Three Springs Road
Bowling Green, KY 42104

Reserve: 800-562-2458

Info: 270-843-1919

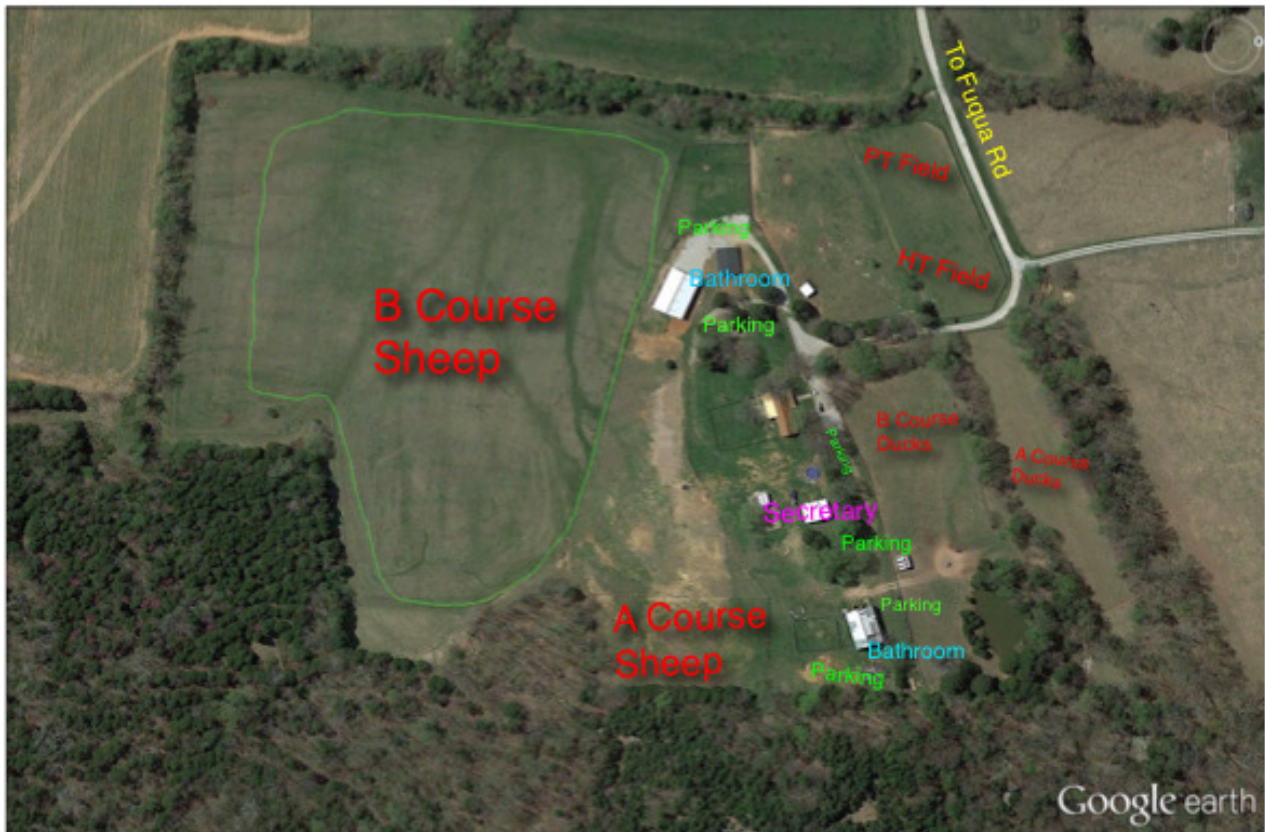
Bend Park

798 Beech Bend Road
Bowling Green, KY 42101
(270) 781-7634

No reservations, first come first serve

www.beechbend.com/campgrounds.htm

Map of Show Site



EMERGENCY INFORMATION:

Emergency Response is 911

Nearest Hospital is Greenview Regional Hospital, 1801 Ashley Cir Bowling Green, KY 270-793-1000.
(There are several emergency clinics in Bowling Green as well close to the Hotels)

Vet will be Alpine Animal Clinic, 2357 Nashville Rd. 270-781-7818 (all vet hospitals in Bowling Green take turns doing emergency calls on off hours and weekends. You contact one and you are forwarded to the facility on call.)

Collie Club of America National Specialty

Judging Schedule

Sunday, March 20, 2016

PLEASE NOTE: Rockfield is in the CENTRAL time zone and is one hour earlier than the main show site in Louisville.

Lunch break during sheep classes at judge's discretion.

Please note that judging of sheep classes will run concurrently with judging for the duck classes. This schedule should minimize ring conflicts; judges may move dogs in the run order to accommodate conflicts if necessary. Per AKC rules, judges have the authority to refuse to judge any dog which does not appear within five minutes of being called for its run.

<u>Sean Hathaway</u>	<u>Joyce Norris</u>
HT – Handlers meeting 7:45 am CDT	Advanced B Ducks – Handlers meeting 7:45 a.m. CDT
HT Sheep – 5 runs 200 – 202, 204, 206	Advanced B Ducks – 2 runs 186 – 187
PT – Handlers meeting to follow	Started B Ducks – Handlers meeting to follow
PT Sheep – 11 runs 220 - 230	Started B ducks – 5 runs 180 – 184
Intermediate B Sheep – Handlers meeting to follow	Advanced A Ducks – Handlers meeting to follow
Intermediate B Sheep – 1 run 185	Advanced A Ducks – 6 runs 160 – 165
Started B Sheep – Handlers meeting to follow	Intermediate A Ducks – Handlers meeting to follow
Started B Sheep – 6 runs 170 – 175	Intermediate A Ducks – 4 runs 145 – 148
Advanced A Sheep – Handlers meeting to follow	Started A Ducks – Handlers meeting to follow
Advanced A Sheep – 7 runs 150 – 156	Started A Ducks – 9 runs 120 – 128
Intermediate A Sheep – Handlers meeting to follow	
Intermediate A Sheep – 3 runs 140 – 142	
Started A Sheep – Handlers meeting to follow	
Started A Sheep – 17 runs 100 – 103, 105 – 117	

Collie Club of America National Specialty

Judging Schedule

Monday, March 21, 2016

PLEASE NOTE: Rockfield is in the **CENTRAL** time zone and is one hour earlier than the main show site in Louisville.

Lunch break during sheep classes at judge's discretion.

Please note run order in each class is **REVERSED** on Monday.

Please note that judging of sheep classes will run concurrently with judging for the duck classes. This schedule should minimize ring conflicts; judges may move dogs in the run order to accommodate conflicts if necessary. Per AKC rules, judges have the authority to refuse to judge any dog which does not appear within five minutes of being called for its run.

<u>Sharol Hathaway</u>	<u>Joyce Norris</u>
HT – Handlers meeting 7:45 am CDT	Advanced B Ducks – Handlers meeting 7:45 am CDT
HT Sheep – 7 runs 206 – 200	Advanced B Ducks – 2 187 – 186
PT – Handlers meeting to follow	Started B Ducks – Handlers meeting to follow
PT Sheep – 10 runs 230 – 223, 221, 220	Started B ducks – 5 runs 184 – 180
Intermediate B Sheep – Handlers meeting to follow	Advanced A Ducks – Handlers meeting to follow
Intermediate B Sheep – 1 run 185	Advanced A Ducks – 6 runs 165 – 160
Started B Sheep – Handlers meeting to follow	Intermediate A Ducks – Handlers meeting to follow
Started B Sheep – 6 runs 175 – 170	Intermediate A Ducks – 4 runs 148 – 145
Advanced A Sheep – Handlers meeting to follow	Started A Ducks – Handlers meeting to follow
Advanced A Sheep – 7 runs 156 – 150	Started A Ducks – 8 runs 128 – 122, 120
Intermediate A Sheep – Handlers meeting to follow	
Intermediate A Sheep – 3 runs 142 – 140	
Briefing – Started A Sheep – Handlers meeting to follow	
Started A Sheep – 16 runs 117 – 108, 106 – 102, 100	