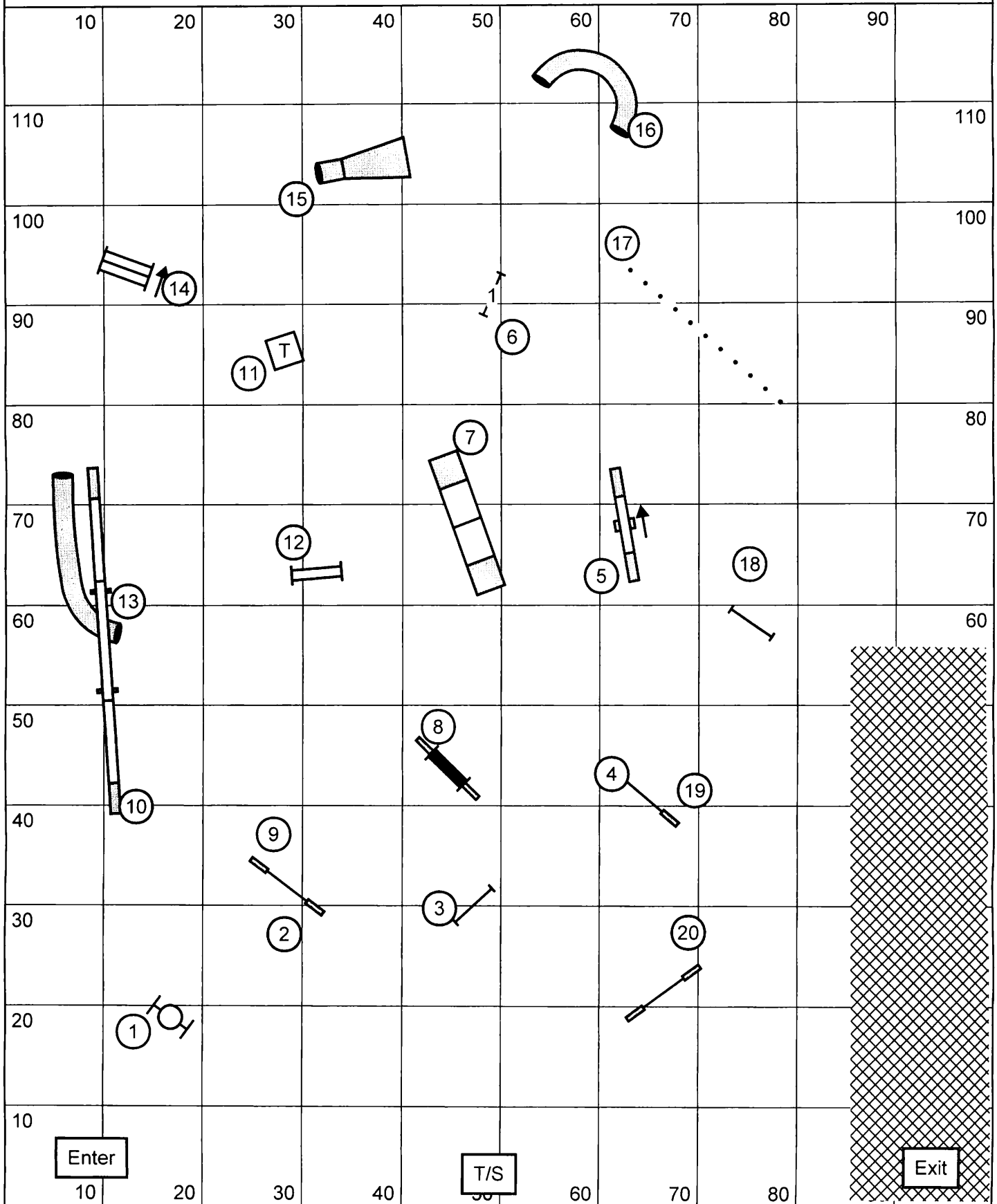


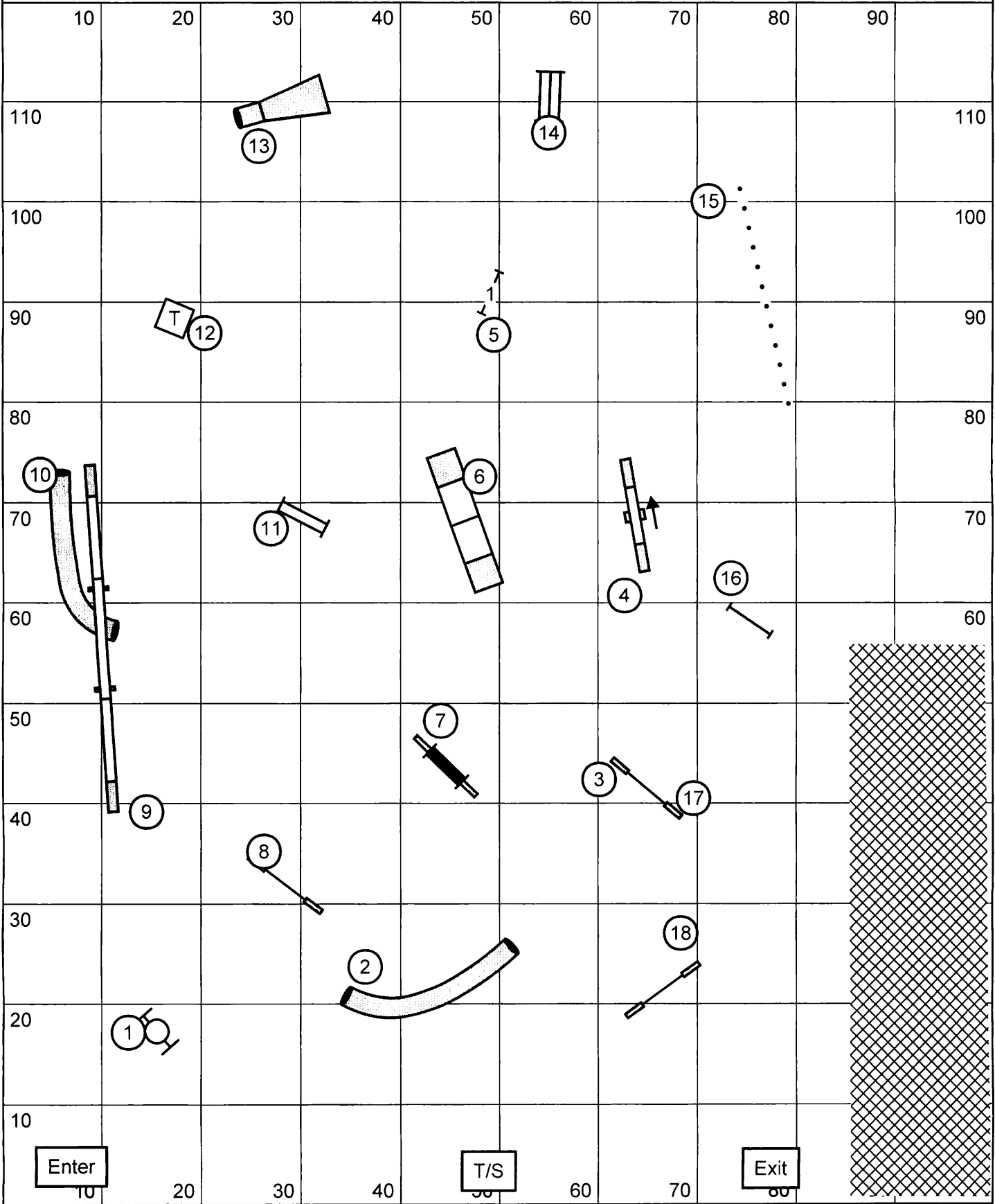
Smack-Dabs Agility Club 5/25/13
 Indoors on Soccer Turf, 100 x 120, Electronic Timing

Masters/Excellent Standard Judge: Keith VanHousen



Smack-Dabs Agility Club 5/25/13
 Indoors on Soccer Turf, 100 x 120, Electronic Timing

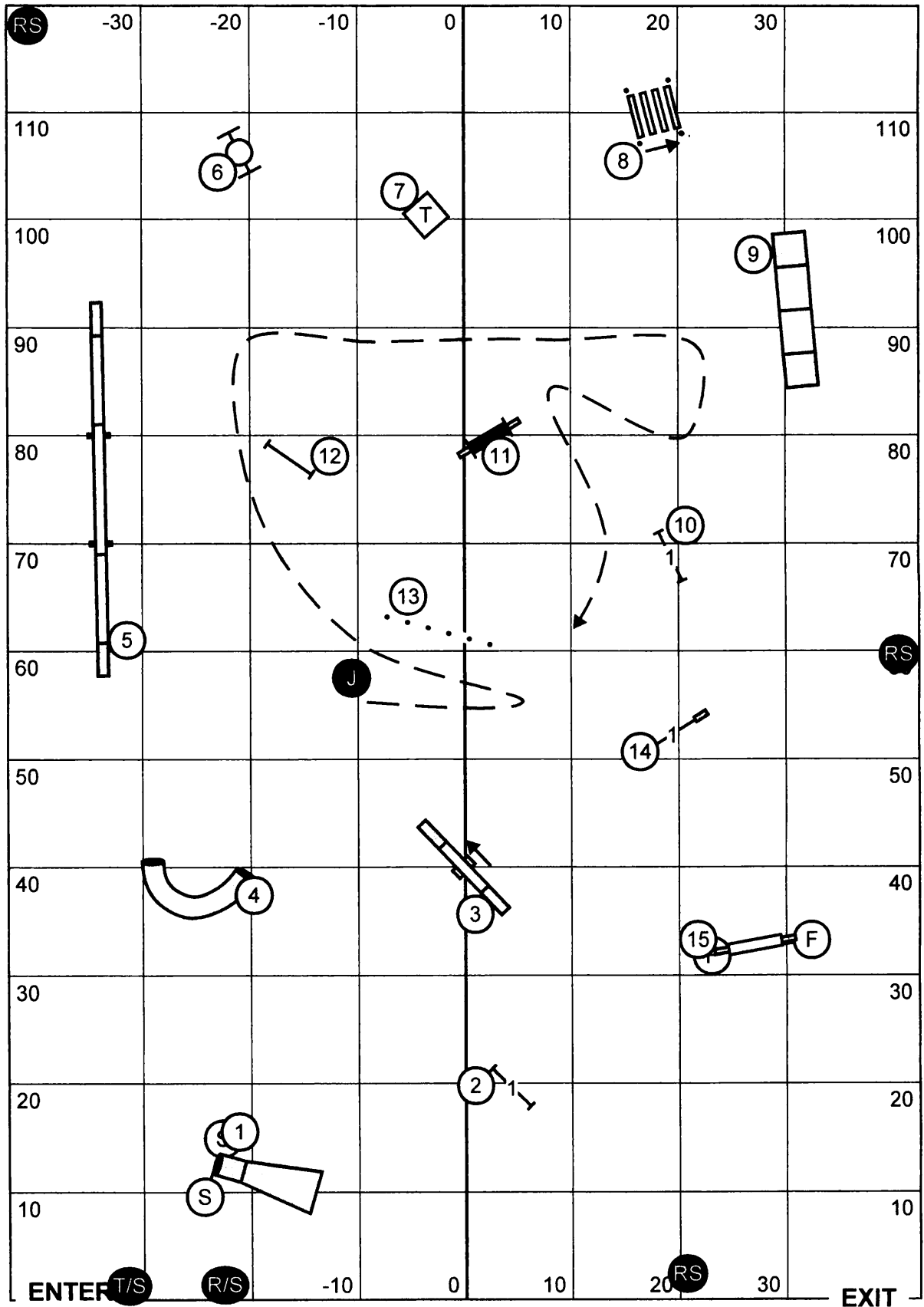
Open Standard Judge: Keith VanHousen



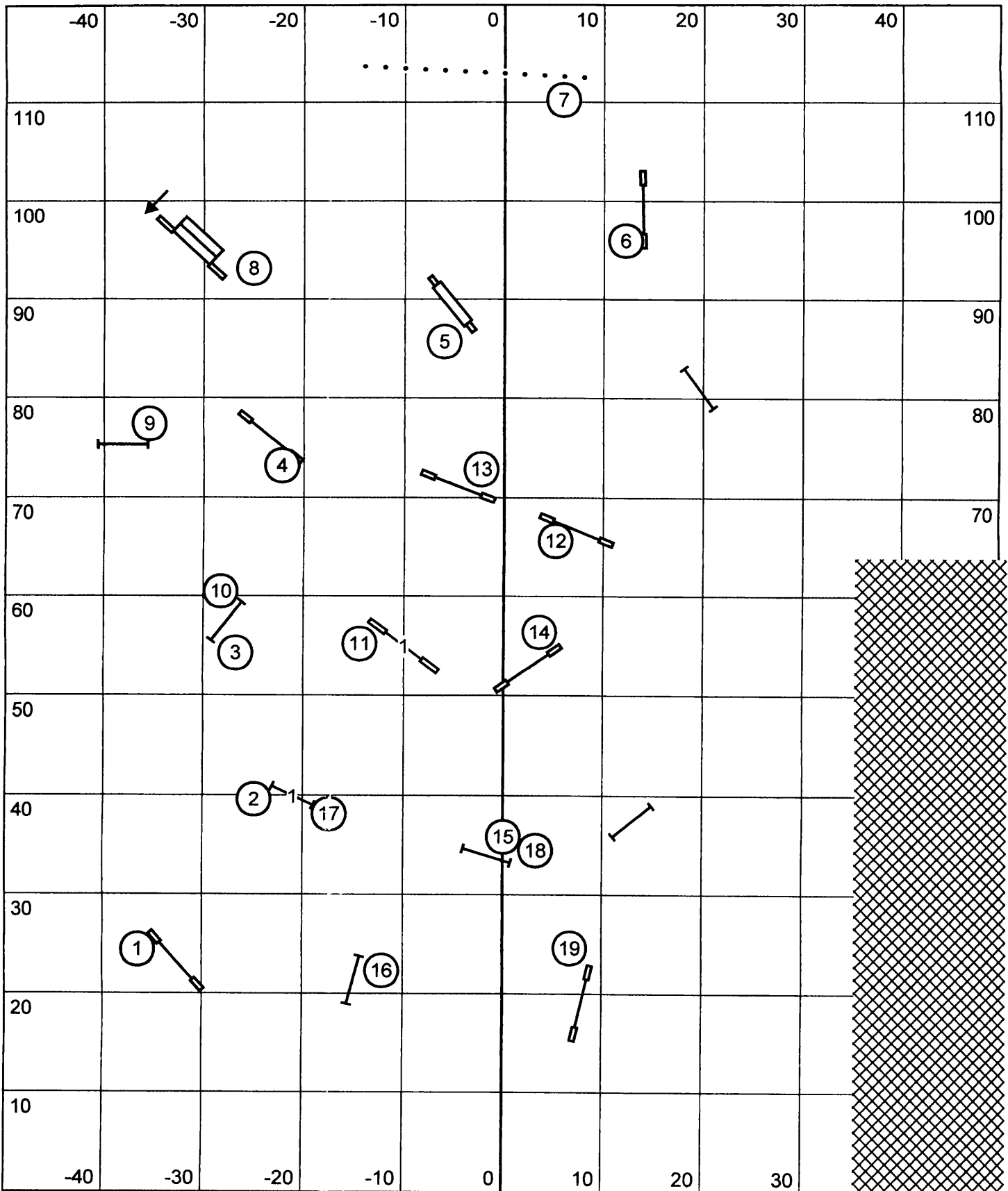
Smack Dab Agility Club of Warrenville
 Agility Trial -
 Saturday, May 25, 2013

Novice Standard

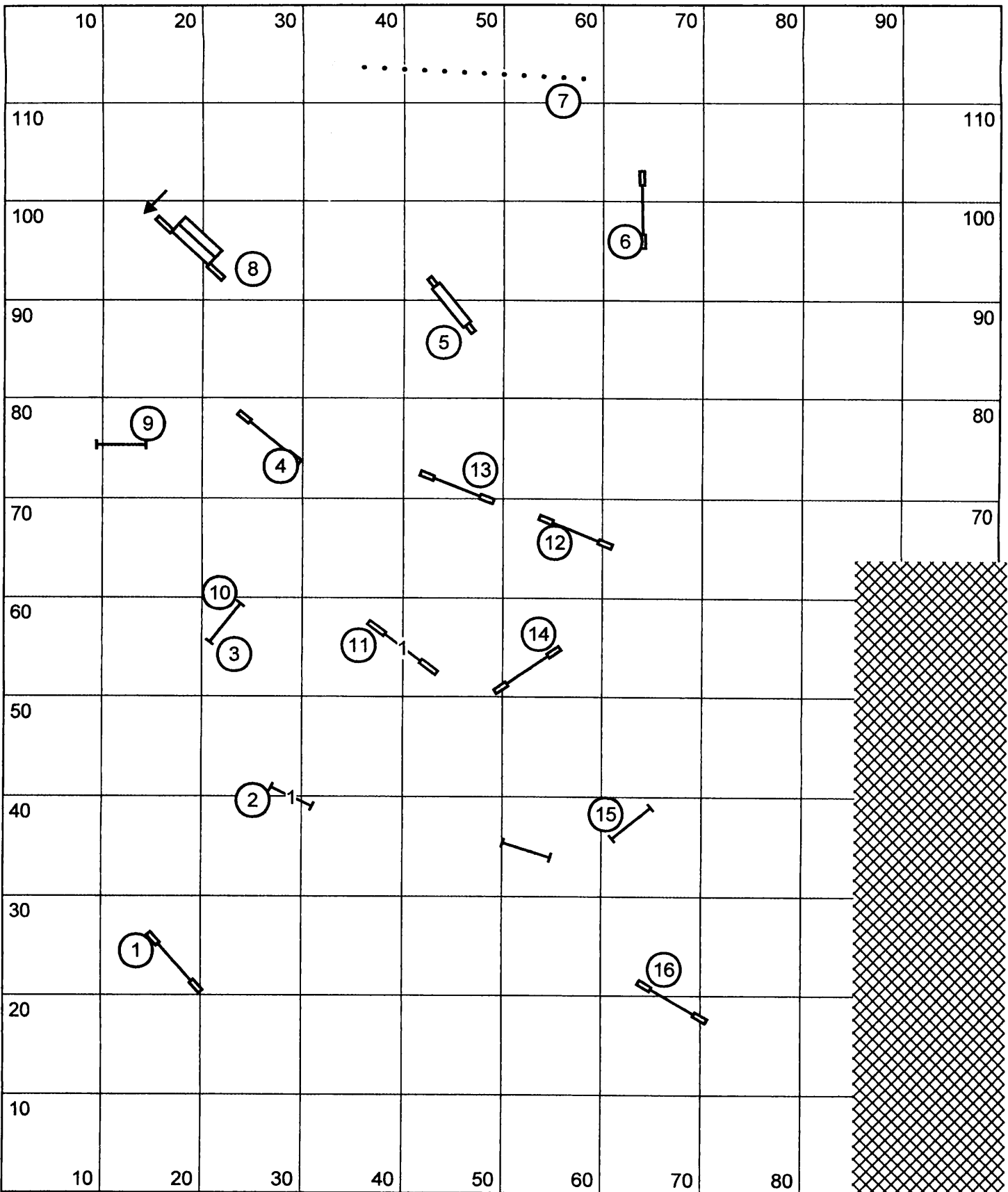
Judge - Candy Nettles



Please enter when the dog in the ring is at # 13 - Weaves



SMACK- DAB AGILITY CLUB 5/25/2013
 100 X 120 INDOORS ON SOCCOR TURF ELECTRONIC TIMING
 JUDGE-DENISE VANHOUSEN
 EXCELLENT JWW

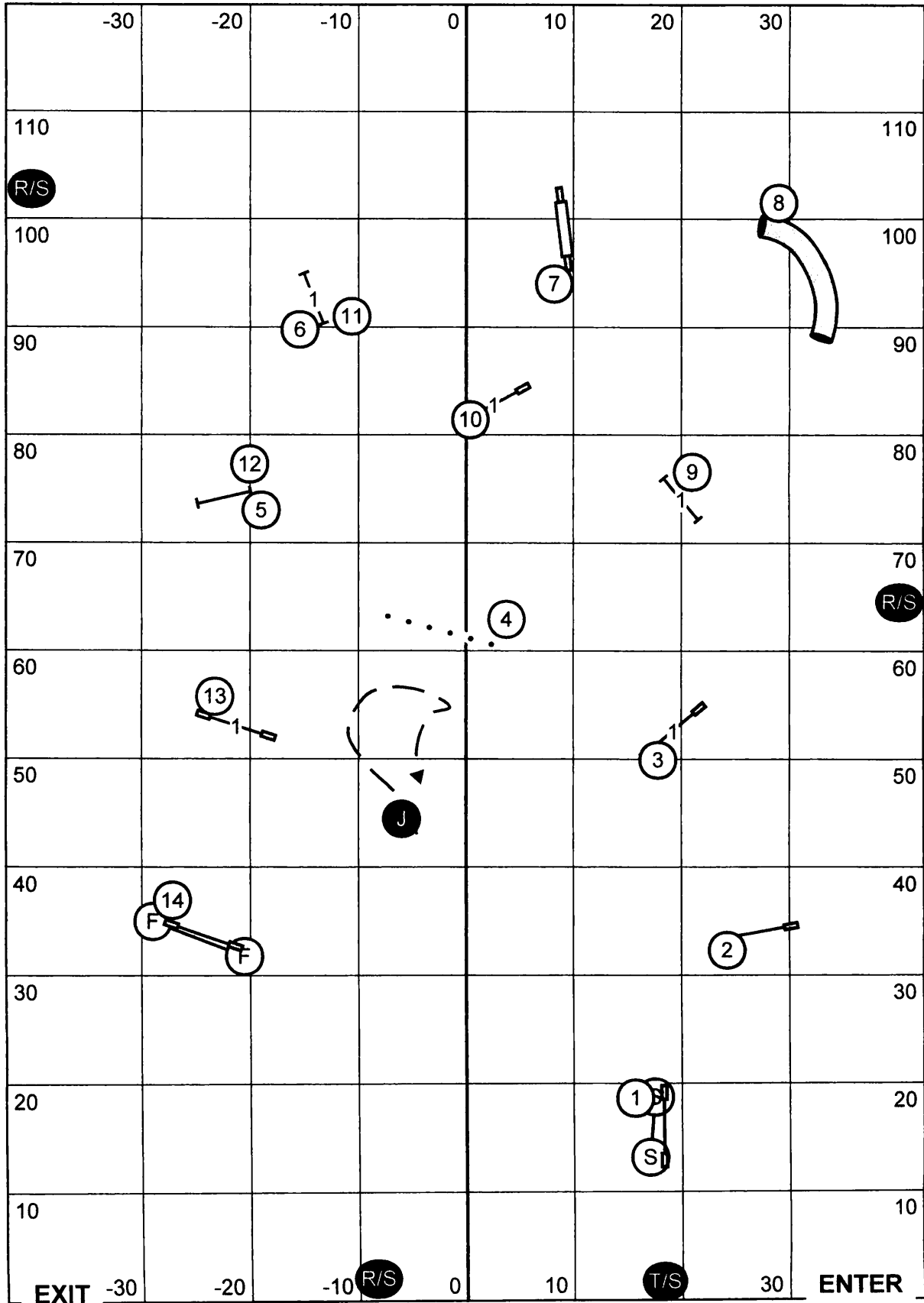


SMACK- DAB AGILITY CLUB 5/25/2013
 100 X 120 INDOORS ON SOCCOR TURF ELECTRONIC TIMING
]JUDGE-DENISE VANHOUSEN
 OPEN JWW

Smack Dab Agility Club of Warrenville
 Agility Trial -
 Saturday, May 25, 2013

Novice JWW

Judge - Candy Nettles

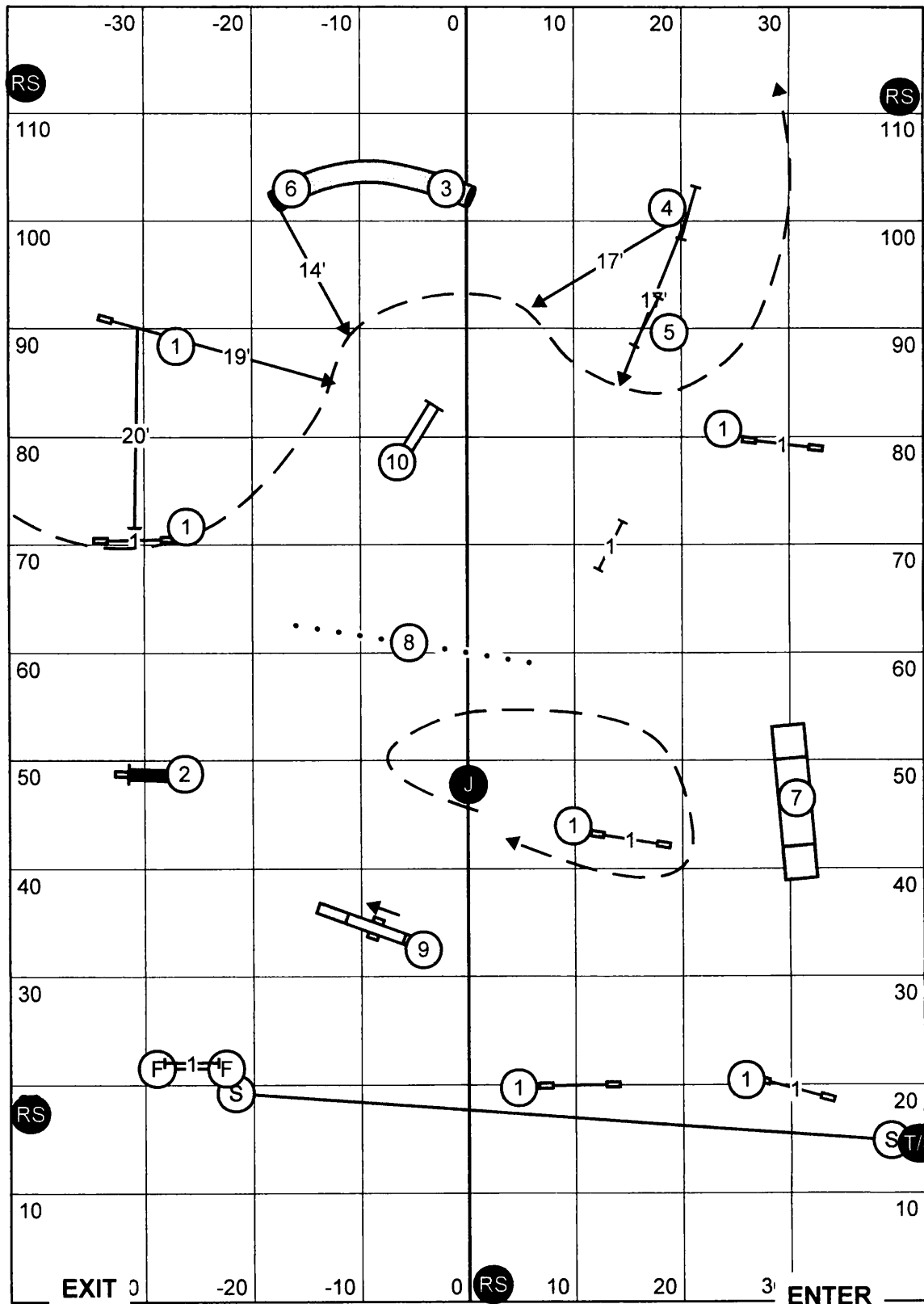


Please enter when the dog in the ring is at # 12

Smack Dab Agility Club of Warrentville
 Agility Trial -
 Saturday, May 25, 2013

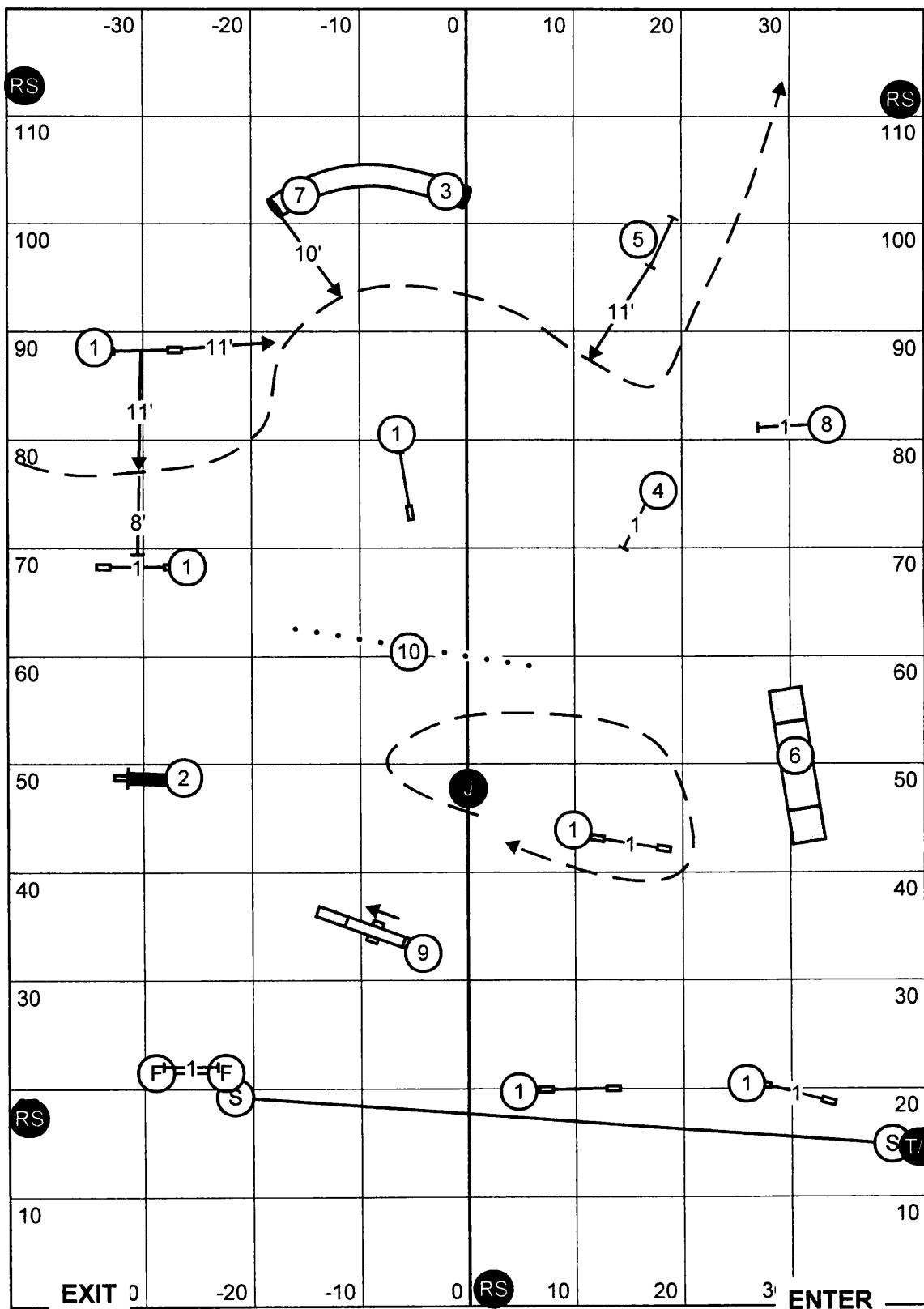
Master/Excellent FAST

Judge - Candy Nettles



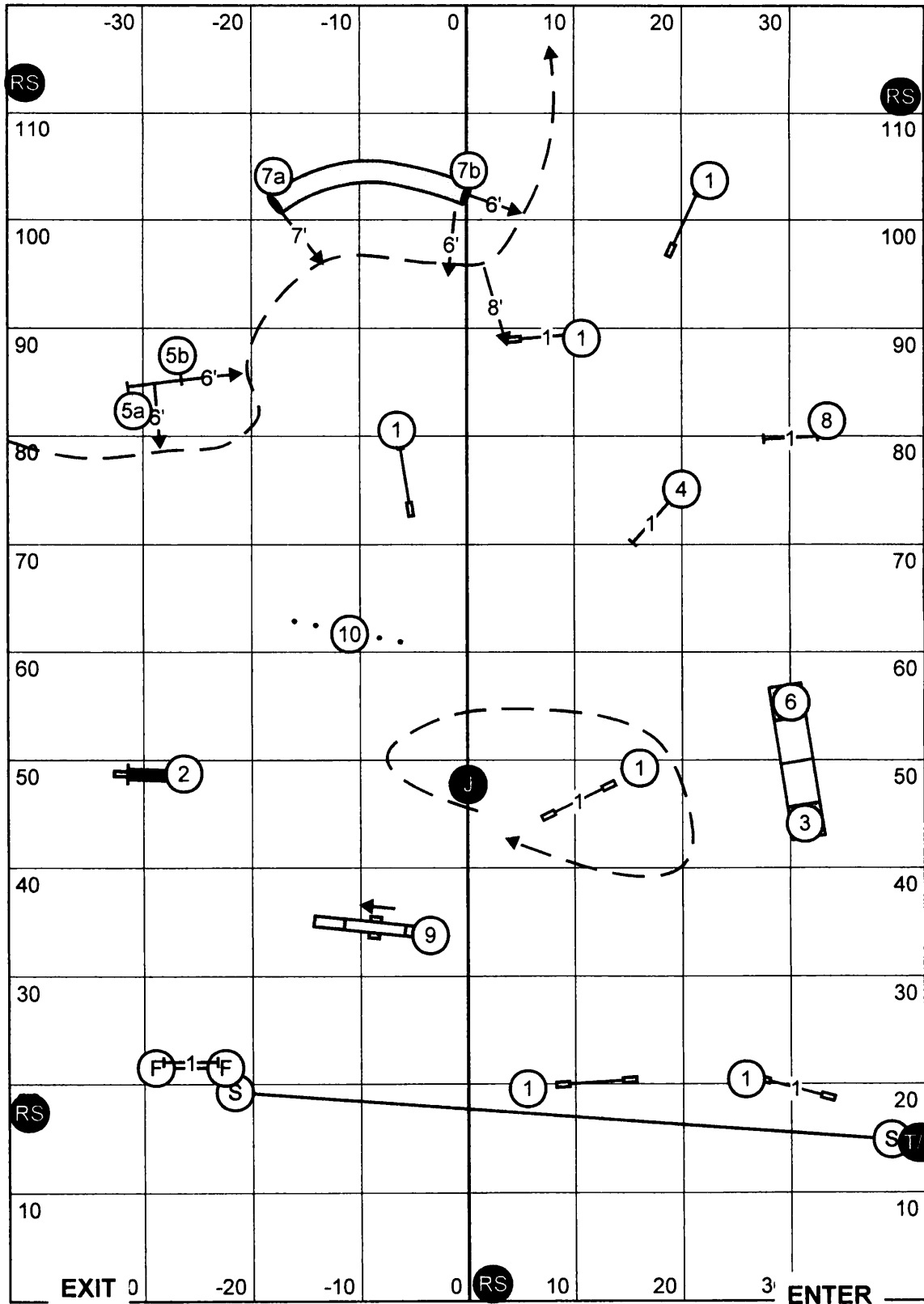
Send = 1-6-4 = 11 Points
 Bonus = 20 Points
 Send + Bonus = 31 Points
60 Points Needed to Qualify

4"	= 41 secs
8", 8"P, 12"P	= 38 secs
12", 16", 16"P, 20"P	= 35 secs
20", 24", 26"	= 32 secs



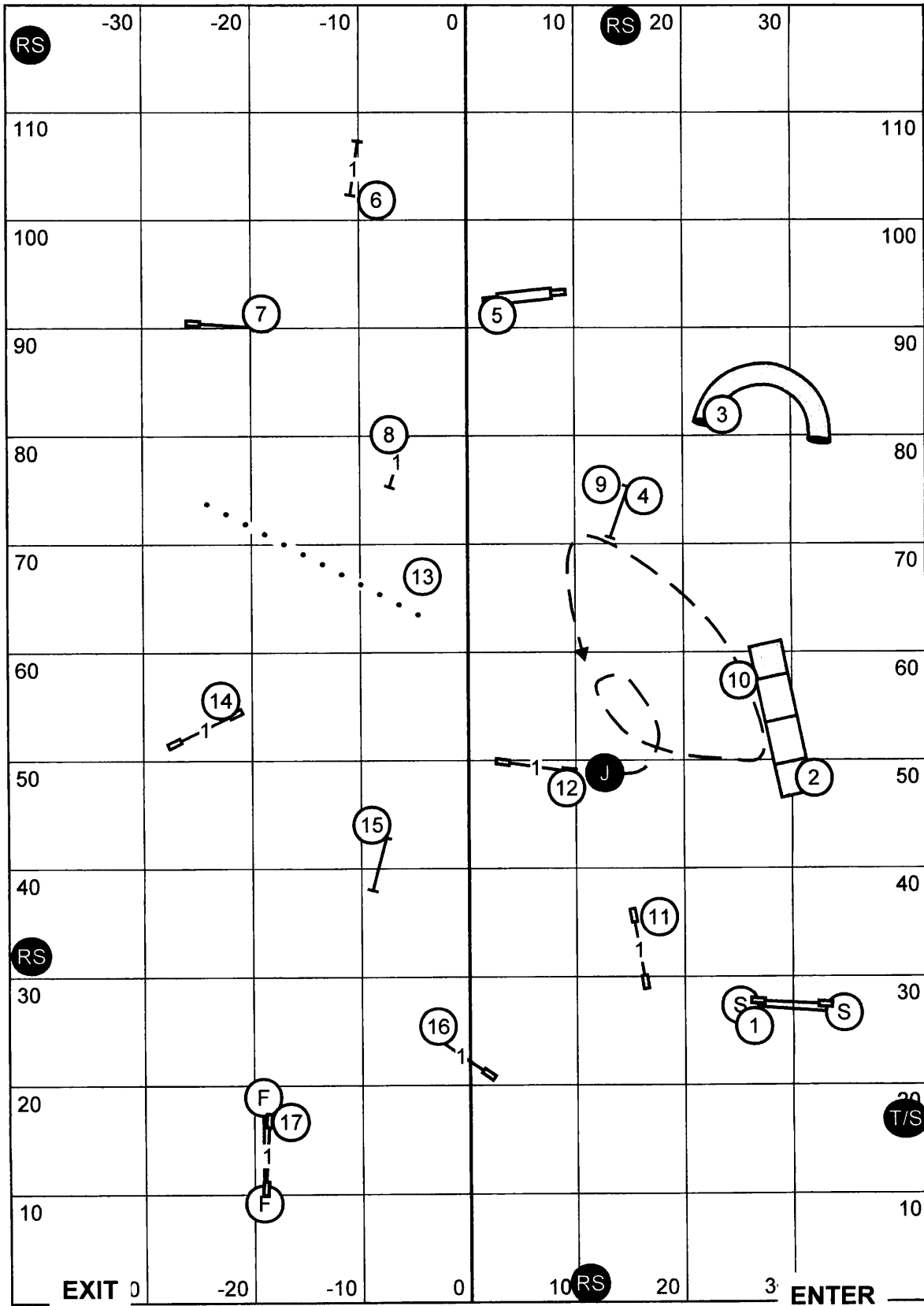
Send = 1-7-5 = 13 Points
 Bonus = 20 Points
 Send + Bonus = 33 Points
55 Points Needed to Qualify

4" = 41 secs
 8", 8"P, 12"P = 38 secs
 12", 16", 16"P, 20"P = 35 secs
 20", 24", 26" = 32 secs



Send = 5a-7a or 7b - 5b = 12 Points
 Bonus = 20 Points
 Send + Bonus = 32 Points
50 Points Needed to Qualify

4" = 41 secs
 8", 8"P, 12"P = 38 secs
 12", 16", 16"P, 20"P = 35 secs
 20", 24", 26" = 32 secs



Please enter when the dog in the ring is at # 16